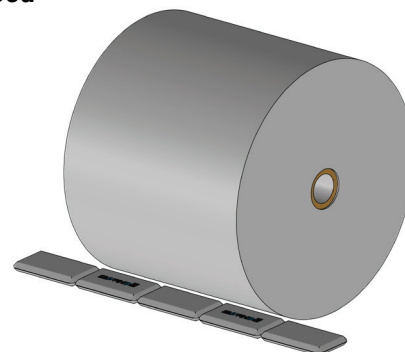


# MoveRoll® Braking Pad

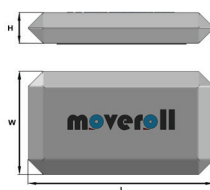
**Patented method for increasing safety and reducing roll speed**

The MoveRoll Braking Pad is an innovative roll speed reducing solution. It can be used to reduce rolls' speed, to stop them completely or to minimize roll bouncing in order to shorten settling time significantly. Unique design and soft materials ensure gentle contact with the roll and no damages are incurred on the roll. MoveRoll Braking Pad is an easy way to increase occupational and roll safety. It can be used in various roll handling applications.



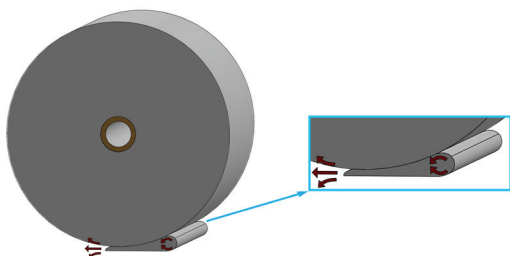
## Braking Pad key data

Length: 1500 mm - 6000 mm  
Width: 240 mm  
Height: 52 mm  
Weight: 2 kg/m



## Braking method

Braking is controlled by combination of special soft material and air that exhausts out of the Braking Pad as the roll passes over it. The air then partially exhausts from the front edge of the pads and partially compresses against the back side of it. This created trapped pressure is used to brake or stop the roll..



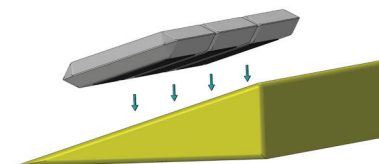
## Benefits

- Increased safety on rolling decks
- Good braking power without roll damages
- Easy to install and relocate
- Reduces settling time in transferring slat conveyors

## Mounting options

MoveRoll Braking Pad can easily be placed on rolling surfaces or existing applications with or without fixing:

- Free standing on flat surfaces
- Magnetic fixing on metal surfaces
- Adhesive fixing on nonmetallic surfaces



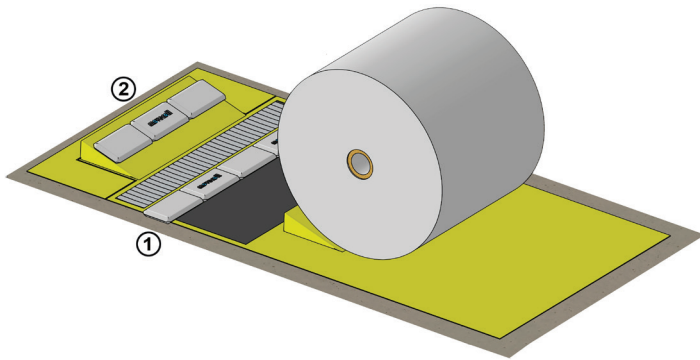
## Dimensions and key data for standard Braking Pad

MoveRoll ID	Length (mm / inch)	Width (mm / inch)	Height (mm / inch)	Weight (kg)
MRBP - 1500	1500 / 59.0	240 / 9.5	52 / 2.0	3.0
MRBP - 2250	2250 / 88.5	240 / 9.5	52 / 2.0	4.5
MRBP - 3000	3000 / 118.0	240 / 9.5	52 / 2.0	6.0
MRBP - 3750	3750 / 147.5	240 / 9.5	52 / 2.0	7.5
MRBP - 4500	4500 / 177.0	240 / 9.5	52 / 2.0	9.0
MRBP - 5250	5250 / 206.5	240 / 9.5	52 / 2.0	10.5
MRBP - 6000	6000 / 236.0	240 / 9.5	52 / 2.0	12.0
MRBP - REQ.	<i>MoveRoll Braking Pad can be ordered in any other length on request</i>			

**To order Magnetic version please add -M after MRBP ID ( example MRBP - 1500-M)**

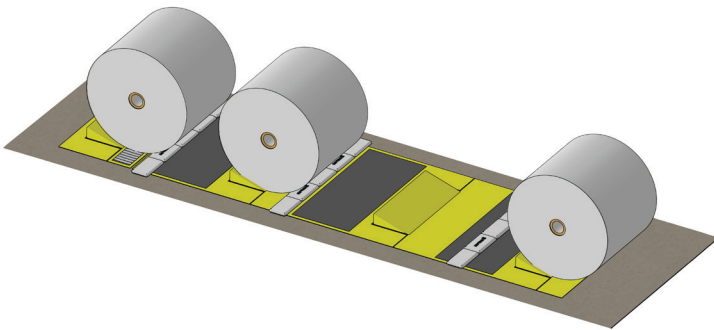
**One Braking Pad reduces roll speed up to 0,5 m/s, depending on the roll speed and dimensions**  
**Tested with incoming roll speed ~1,5 m/s and ~1,0 m/s with different roll dimensions**

## MoveRoll® Braking Pad application samples



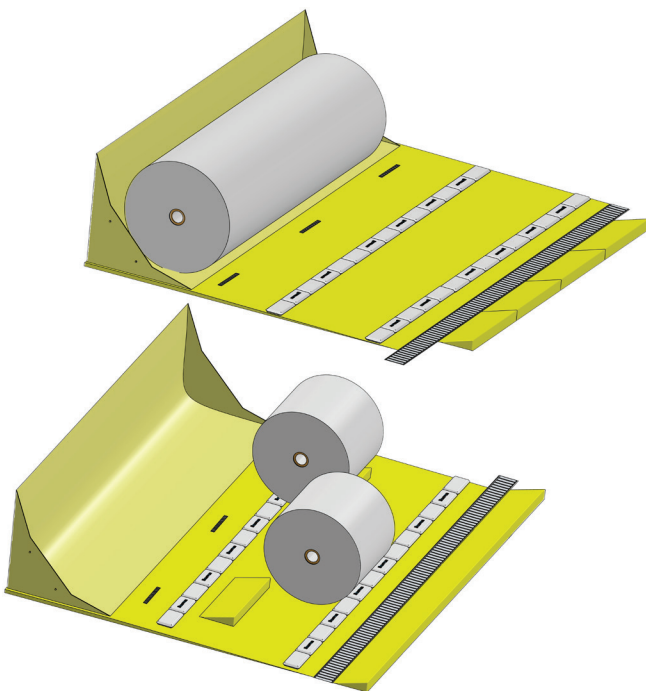
MoveRoll Braking Pad can be used before chain or slat conveyor (1) to reduce incoming roll speed and bouncing. This shortens roll settling time on conveyor and decreases total conveying lead time.

MoveRoll Braking Pad can be used on plate stopper (2) to soften impact and prevent roll damage.



MoveRoll Braking Pad can be used on different sections of ramp applications to reduce roll speed before hitting stoppers and minimizing roll bouncing.

It also softens impact to plate stopper in order to reduce damages to mechanical parts and to roll itself.



MoveRoll Braking Pad can be used in two separate rows in high speed applications, e.g. on winder decks with larger roll sizes where rolling speed is high. The rows decrease roll's kinetic energy and speed significantly.

MoveRoll Braking pad can be used on winder deck applications with separation stoppers before and after separation stations. This reduces bouncing after contact with the stoppers.

Lower roll speeds on winder decks will increase occupational safety of operators working on winder decks or in similar applications.

By using magnetic fixing option on metal surfaces the Braking Pads can easily be relocated to another desired position.